

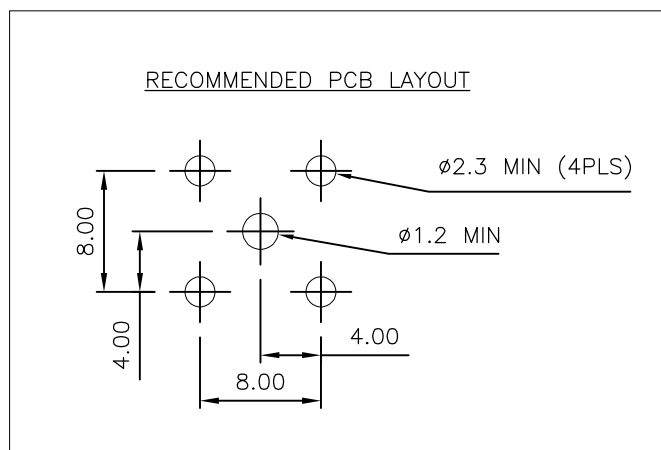
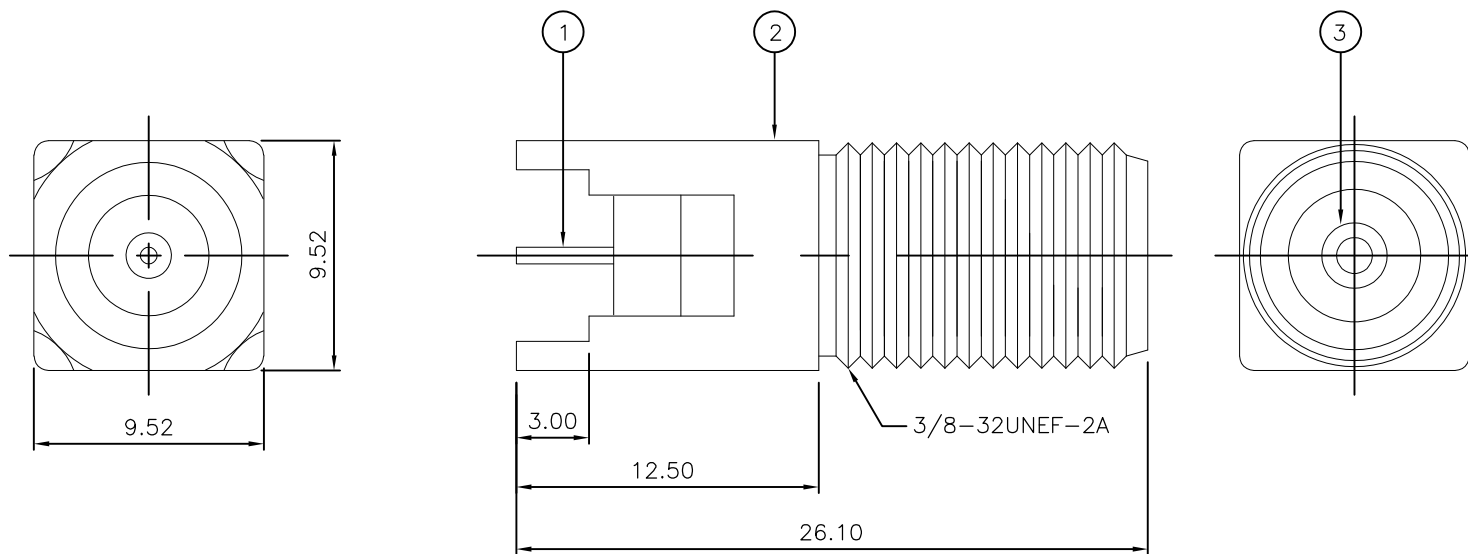
THIS DRAWING IS UNPUBLISHED. RELEASED FOR PUBLICATION AUGUST ,2006.

© COPYRIGHT 2006 BY TYCO ELECTRONICS CORPORATION. ALL RIGHTS RESERVED.

| LOC | DIST | REVISIONS |     |               |         |     |      |
|-----|------|-----------|-----|---------------|---------|-----|------|
| E   | B    | P         | LTR | DESCRIPTION   | DATE    | DWN | APVD |
|     |      | B         |     | ECR-07-028790 | 29NOV07 | JMS | FWK  |

NOTES:

- 1 PACK IN ACCORDANCE WITH AMP SPEC 107-3275
- 2 100 TRAY PACK IN ACCORDANCE WITH AMP SPEC 107-3275
- 3 Sn PLATING
- 4 Ni PLATING
- 5 ELECTRICAL CHARACTERISTICS  
 FREQUENCY RANGE: DC - 2 GHz  
 NOMINAL IMPEDANCE: 75 Ohm  
 INSULATION RESISTANCE: 5000 MOhm  
 WORKING VOLTAGE: 250 Volts RMS at Sea Level  
 DIELECTRIC WITHSTAND VOLTAGE: 500 Volts RMS Max  
 CONTACT RESISTANCE:  
 CENTRE CONTACT: 1.50 mOhm Max  
 OUTER CONTACT: 0.20 mOhm Max
- 6 MECHANICAL CHARATERISTICS  
 DURABILITY: 50 Cycles Min
- 7 ENVIRONMENTAL CHARACTERISTICS  
 OPERATING TEMPERATURE: -65 to +85 DegC
- 8 FOR TECHNICAL DATA REFER TO YOUR LOCAL TYCO ELECTRONICS SALES OFFICE
- 9 ALL DIMENSIONS ARE NOMINAL FOR REFERENCE ONLY UNLESS OTHERWISE STATED



| QTY  | QTY  | MATERIAL                 | DESCRIPTION | ITEM |
|------|------|--------------------------|-------------|------|
| 1    | 1    | PE                       | INSULATION  | 3    |
| 1    | 1    | ZINC $\Delta$            | BODY        | 2    |
| 1    | 1    | PHOSPHOR BRONZE $\Delta$ | CONTACT     | 1    |
| 5--1 | 5--0 |                          |             |      |

QUANTITY PER ASSY      PARTS LIST

|   |             |                                   |   |                    |
|---|-------------|-----------------------------------|---|--------------------|
| THIS DRAWING IS A CONTROLLED DOCUMENT.  |             | DWN<br>J.SANDWELL<br>16AUG06      | Tyco Electronics Corporation<br>Bideford EX39 4HE |                    |
| DIMENSIONS:<br>mm   |             | CHK<br>S.PARLOW<br>16AUG06        | NAME<br>F TYPE STRAIGHT PCB SOCKET 75 OHM         |                    |
| TOLERANCES UNLESS OTHERWISE SPECIFIED:<br>0 PLC ± -<br>1 PLC ± -<br>2 PLC ± -<br>3 PLC ± -<br>4 PLC ± -<br>ANGLES ± - |             | APVD<br>F.WHEELER-KING<br>16AUG06 | PRODUCT SPEC<br>-<br>APPLICATION SPEC<br>-        |                    |
| MATERIAL<br>SEE TABLE   | FINISH<br>- | WEIGHT<br>-                       | SIZE<br>A3  | CAGE CODE<br>00779 |
| CUSTOMER DRAWING  |             | DRAWING NO<br>G-1814825           |   | RESTRICTED TO<br>- |
|   |             | SCALE<br>NTS                      | SHEET<br>1 OF 1                                   | REV<br>B           |